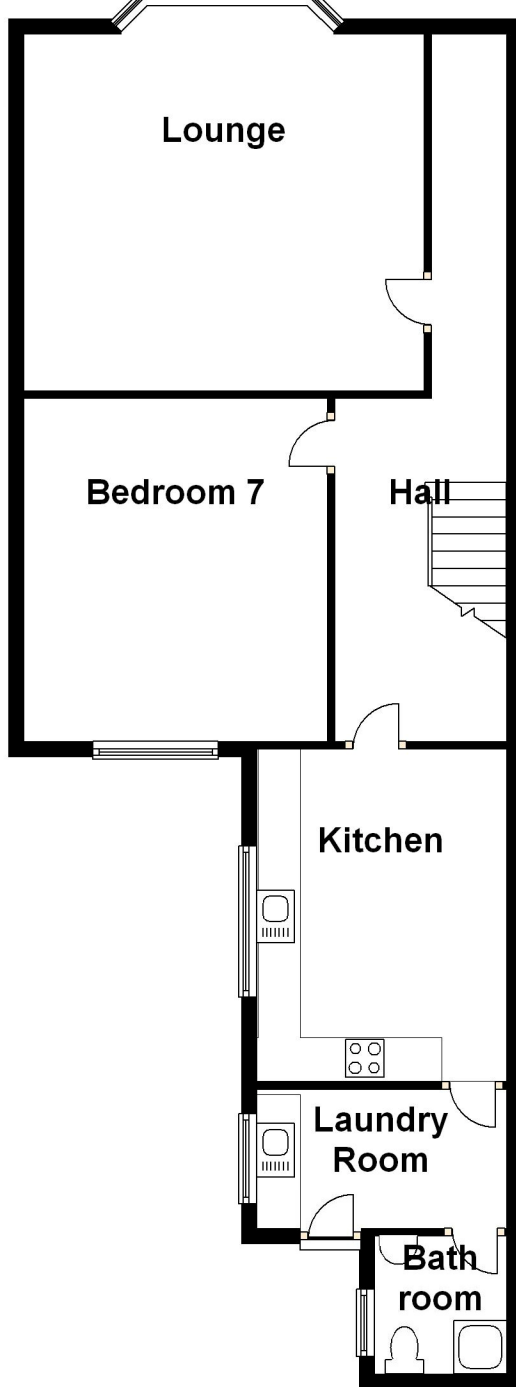


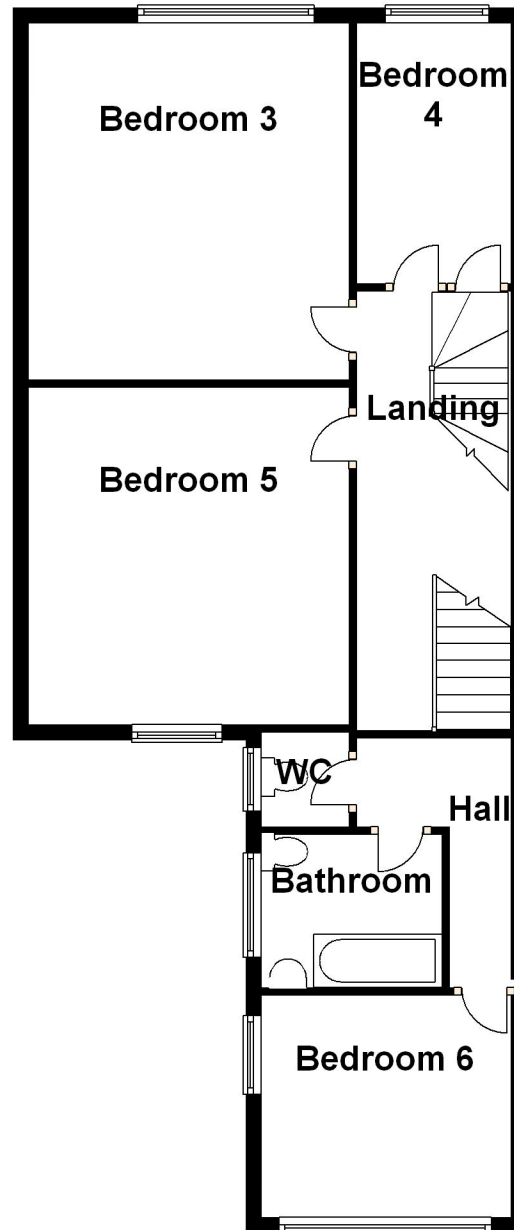
## Ground Floor

Approx. 81.5 sq. metres (877.2 sq. feet)



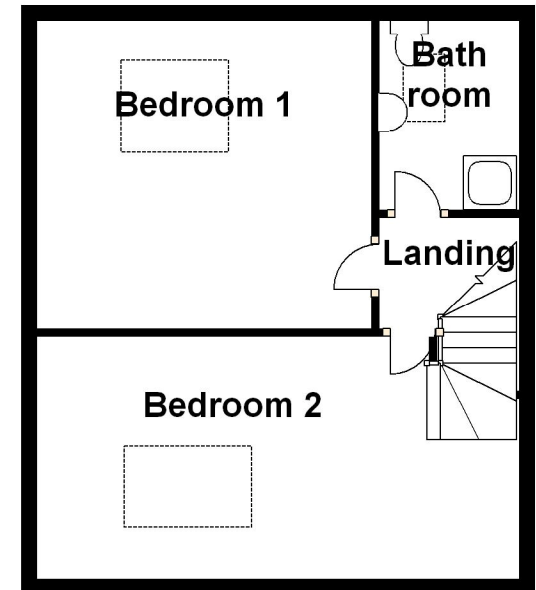
## First Floor

Approx. 73.8 sq. metres (793.9 sq. feet)



## Second Floor

Approx. 45.1 sq. metres (485.4 sq. feet)



Total area: approx. 200.3 sq. metres (2156.4 sq. feet)